

Remember - ENECRETE® WP is the water plugging component of our leak and seep stopping system - see information on ENECRETE® WS (the water sealer) to seal walls and floors against dampness and seepage...

Revolutionary products . . .

. . . for rebuilding, resurfacing and protecting all types of fluid flow machinery, equipment and structures.

ENECRETE® WP

repair and waterproofing for masonry structures.

Rapid-set formulation.
Add water, mix & apply.
Simple & quick to use.
No special tools required.

ENECRETE® WP combines the most advanced accelerators with special volume stabilizing additives to provide the fastest and most extraordinary leak stopping technology available.

ENECRETE® WP is used to stop running water, patch defective masonry and grout bolts and anchors.

ENECRETE® WP

The jobsite leak plugger that stops running water in under 60 seconds!

ENECRETE® WP is a cementitious, one component, extremely fast-setting product with the ability to stop running water through masonry structures. It is designed to be mixed with water and to set within **one minute**.

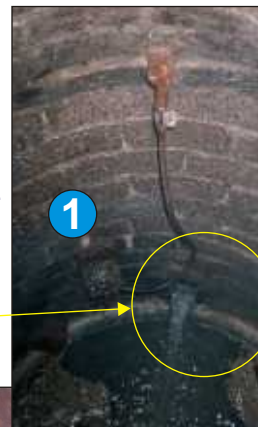
ENECRETE® WP's unique properties enable it to stop leaks and running water:

- Sets in one minute • Develops strength immediately • Chemically resistant
- Does not shrink or expand significantly • Has excellent freeze-thaw resistance
- Exhibits thermal expansion properties similar to concrete

ENECRETE® WP is easy to use in the field under adverse conditions.

- Just add water, no other additives!
- It can be mixed with a gloved hand, no mixing equipment required.
- Fast and simple surface preparation.
- The application technique to stop water takes only minutes to master.

1. The problem - manhole walls seeping water and an active leak filling the site with water...



2. A small batch of WP is quickly mixed and is ready for use...



3. The breach is cleaned of loose mortar and WP is applied to instantly stop the leak, forming a watertight plug...



4. The job is completed by sealing in and around the point of entry.

www.enecon.com

ENECON Corporation
The Fluid Flow
Systems Specialists.

1-888-4-ENECON

Tel: 516 349 0022 · Fax: 516 349 5522

email: enecon@enecon.com

700 Hicksville Road · ENECON Center · Suite 110 · Bethpage, NY 11714-3496

ENECRETE® WP

repair and waterproofing for masonry structures.

ENECON®

SURFACE PREPARATION - Holes and cracks should be chiseled out to at least ¾ inches in depth and width, with the rear of the hole slightly larger than the opening. The chiseled opening should be cleaned to remove any loose material, oil, grease, dirt, mold, mildew or algae.

ENECRETE® WP is designed to stop active water leaks. It will begin to harden in approximately **30 seconds** — remember to have the surface prepared properly before you start to mix. Mix only a small amount of ENECRETE WP at one time — about the size of a baseball.

MIXING - ENECRETE® WP should be mixed with a gloved hand, in a clean plastic container with clean water, for 30 seconds maximum. Since ENECRETE® WP must be applied in one minute, only mix small amounts of it at a time.

APPLICATION - After mixing, the ENECRETE® WP is formed into a ball and forced by hand or trowel into the crack or hole. The mixed material should be held in place for approximately 30 seconds until it hardens.

CLEAN UP - Wash gloves, mixing bucket and utensils with water. Once hardened, remove by mechanical methods.

Technical Data

Volume capacity per kg.	750 cc / 46 in ³	
Mixed density	1.67 g/cc or .06 lbs/in ³	
Mixing ratio	POWDER	WATER
	by volume	3.0
by weight	3.6	1.0
Shelf life	18 Months in unopened, original containers.	
Compressive strength (ASTM C-109)		
1 Hour	=	1000 psi
1 Day	=	3500 psi
1 Month	=	5000 psi

Your Local ENECON® Fluid Flow Systems Specialist

Every effort is made to insure that ENECON® products are as simple and safe to use as possible. Normal industry standards and practices for housekeeping, cleanliness and personal protection should be observed. Please refer to the detailed MATERIAL SAFETY DATA SHEETS (MSDS) supplied with the material (also available on request) for more information.

Technical Support - The ENECON® engineering team is always available to provide technical support and assistance. For guidance on difficult application procedures or for answers to simple questions, call your local ENECON® Fluid Flow Systems Specialist or the ENECON® Engineering Center.

All information contained herein is based on long term testing in our laboratories as well as practical field experience and is believed to be reliable and accurate. No condition or warranty is given covering the results from use of our products in any particular case, whether the purpose is disclosed or not, and we cannot accept liability if the desired results are not obtained.

Copyright © 2001 by ENECON® Corporation. All rights reserved. No part of this work may be reproduced or used in any form or by any means - graphic, electronic or mechanical including photocopying, recording, taping or information storage and retrieval systems - without written permission of ENECON® Corporation.